

Lowers

mounting instructions for Windjammer III, SS, IV and Vindicator, II

Warning DO NOT MODIFY THESE LOWERS FOR USE WITH SAFETY BARS OR FOR USE ON MOTORCYCLES OTHER THAN THOSE LISTED. MODIFICATION CAN LEAD TO FAILURES OF THE LOWERS AND/OR INTERFERENCE WITH THE OPERATION OF THE MOTORCYCLE.

The lowers are designed for use on the following motorcycles ONLY:

- TYPE 1 HONDA GL1000
- TYPE 2 HONDA CB750A, CB750K 1977-78
SUZUKI GS400, X, GS425, E,L, GS550, E,L, GS750, E,L;
YAMAHA XS ELEVEN, Special.
- TYPE 3 HONDA CB750F, 1977-78, KAWASAKI KZ650, CUSTOM,
KZ900, LTD, KZ1000, LTD, ST, MKII, SUZUKI GS850,
GS1000, E,L.
- TYPE 4 HONDA CB550F, CB550K, CB650; KAWASAKI KZ750;
YAMAHA XS360, XS400, XS500, XS650, Special,
XS750, Special.
- TYPE 5 HONDA CB750F 1975-76, CB750K 1975-76.
- TYPE 6 BMW/7.
- TYPE 9 HONDA CX500, 78, 79, 80
- TYPE 10 HONDA CB750 K,L,F 1979, 80

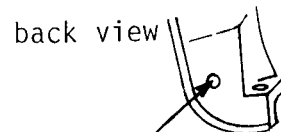
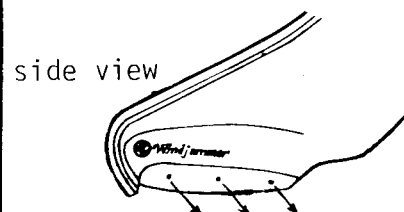
Windjammer II Mounting Lowers

It may be necessary on the Honda CB750 K5 and K6 and the older CB550 models to relocate the ignition switch to the handle bars. A switch plate may be obtained from your local dealer.

If the lowers are to be used on a Windjammer II, contact your dealer for drilling information. Should your dealer be unavailable, refer to the customer service note on page 3.

1

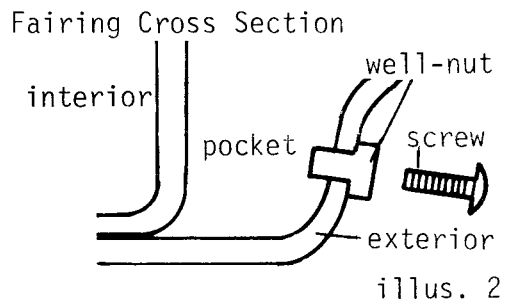
Remove the tonneau covers from your fairing. Remove the eight black plugs in the lower mounting holes by pushing the plug from the inside of the fairing out. See plug locations in illus. 1.



illus. 1

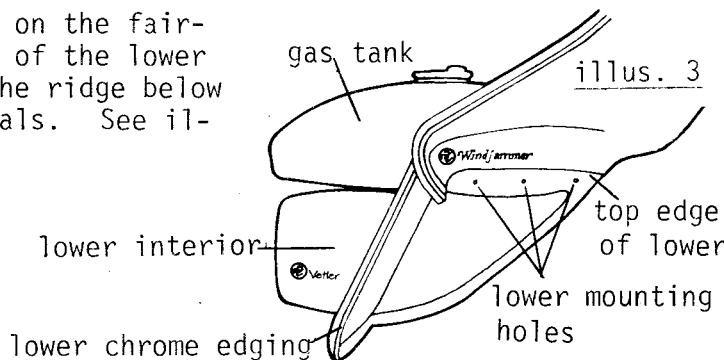
Vetter

2 Insert a rubber well-nut into each of the eight 3/8" holes in the fairing. The flange of the well-nut should be on the outside of the fairing. If it is difficult to push the well-nut into the hole, start one of the screws into the well-nut and push on the screw rather than the rubber. See illustration 2.



illus. 2

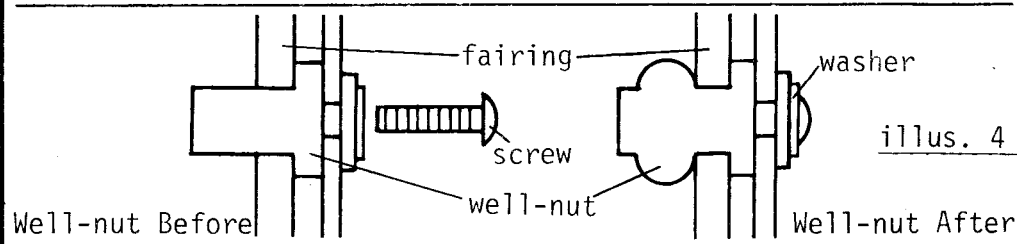
3 Position one lower on the fairing. The top edge of the lower fits close along the ridge below the Windjammer decals. See illustration 3.



illus. 3

Note The interior hole in the fairing may not be positioned in the correct place on some Vetter fairings. If so, use a grease pencil to mark the correct position where the hole should go. Remove the lower and use a 3/8" drill bit to drill the new well-nut hole. Be careful not to drill the new hole too close to the existing one. Insert the well-nut.

4 Starting at the interior mounting holes fasten the lower with the screws and washers provided. Keep a steady inward pressure on screw to assure that well-nuts do not pull out of fairing.

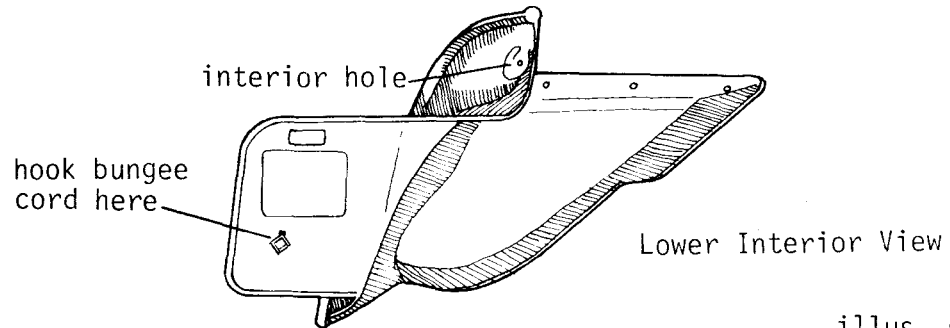


illus. 4

Well-nut Note

AFTER THE SCREWS BEGIN TO TIGHTEN, ONE OR TWO MORE FULL TURNS ARE NEEDED TO ASSURE THAT THE RUBBER SWELLS OUT ON THE INSIDE OF THE FAIRING WALL. DO NOT OVER TIGHTEN.

- 5** If there is a bungee cord supplied with the lowers, attach it to the fastener at the rear of the lower. Carefully route the bungee under the carburetors and attach it to the fastener on the opposite lower. See illustration 5.



illus. 5

Warning

BE CAREFUL WHEN ROUTING THE BUNGEE UNDER THE CARBURETORS THAT IT IN NO WAY INTERFERES WITH THE THROTTLE OPERATION. TO CHECK THIS, OPERATE THE THROTTLE OPEN AND CLOSED TO SEE IF ANY THROTTLE LINKAGE COULD POSSIBLY COME IN CONTACT WITH THE BUNGEE. IF IT CAN, REMOVE THE BUNGEE AND LEAVE IT OFF.

NOTE:

Since one type of lower can fit more than one model motorcycle there may be extra clearance in different areas; this is normal. Also by design some lowers rest against the engine cases and can be under tension, this is also normal and should not be of concern.

Customer Service

If there are any problems concerning compatibility or installation of lowers please contact your dealer. If your dealer is unavailable, please contact the Customer Service Department, Vetter Corporation, Rantoul, IL 61866 (217) 893-9300.

Note

THESE LOWERS AND THESE INSTRUCTIONS WERE DESIGNED SOLELY FOR USE WITH FAIRINGS MANUFACTURED BY VETTER CORPORATION. EACH LOWER TYPE IS SPECIFICALLY MANUFACTURED FOR CERTAIN MODEL MOTORCYCLES AND CONTAINS A LABEL INDICATING THE TYPE IT IS. THESE INSTRUCTIONS MUST BE GIVEN TO THE CONSUMER BECAUSE THEY CONTAIN VALUABLE INFORMATION FOR FUTURE REFERENCE.

VETTER CORPORATION PRODUCTS LIMITED WARRANTY

This warranty applies to products manufactured or distributed by Vetter Corporation, Rantoul, Illinois 61866, (217) 893-9300, and sold by Vetter Corporation or its authorized dealers within the United States, Puerto Rico, and the Virgin Islands. It is given to the first retail purchaser only, and is not transferable to subsequent owners.

WARRANTY OBLIGATIONS: Vetter Corporation warrants that it, or one of its authorized dealers, will repair or, at its option, replace any part proven to be defective in factory material or workmanship within six (6) months (unlimited mileage) of the date of purchase. Parts repaired or replaced under this warranty are warranted only during the balance of the original warranty period. THIS WARRANTY DOES NOT INCLUDE ANY LABOR CHARGES FOR TROUBLESHOOTING, REMOVAL, OR INSTALLATION.

EXCLUSIONS FROM COVERAGE: 1. Any repairs or replacements of parts necessitated by misuse, negligence, fire, accident, damage caused by exposure to gasoline, brake fluid, harmful solvents and cleaners, paints, or repair material, use of unauthorized accessories, faulty installation, installation upon motorcycles or vehicles not listed in Vetter Corporation's retail and dealer catalog sheets, or improper or unreasonable maintenance are not covered. 2. This warranty does not cover "Totes" rainboots

DISCLAIMER OF CONSEQUENTIAL DAMAGES AND LIMITATIONS OF IMPLIED WARRANTIES: TO THE EXTENT THE LAW PERMITS, VETTER CORPORATION SHALL NOT BE LIABLE UNDER ANY CIRCUMSTANCES FOR LOSS OF USE OF THE PRODUCT, CONSEQUENTIAL OR INCIDENTAL DAMAGES, ANY IMPLIED WARRANTY ARISING UNDER LAW, INCLUDING THOSE OF MERCHANTABILITY AND FITNESS FOR A PARTICULAR PURPOSE IS LIMITED TO THE DURATION OF THIS LIMITED WARRANTY.

IMPORTANT: Some states do not allow limitations on how long an implied warranty lasts and/or limitations or exclusions of consequential or incidental damages, so the above limitations may not apply to you.

TO OBTAIN WARRANTY SERVICE: Information you must provide when filing a claim: 1. Name, mailing address and telephone number. 2. Selling dealer's name and address. 3. Serial number on serialized products. 4. Model and year of motorcycle. 5. Date product was purchased. 6. Date and mileage at failure. 7. Description of problem.

STEPS TO TAKE: 1. Contact or take your product to an authorized Vetter dealer (preferably your selling dealer) at your expense. 2. If you are unable to obtain warranty service, or should your warranty claim be denied for reasons you consider unjustifiable, contact the owner of your selling dealer. Normally, this should resolve your problem. However, if you require further assistance, write or call the Customer Service Department of Vetter Corporation, Rantoul, Illinois 61866 (217) 893-9300.

At this point, you must be prepared to return the part in question to Vetter Corporation with all freight charges prepaid. The charges will be reimbursed to you if they total over \$5.00 (five dollars), and the warranty claim is honored. This warranty gives you specific legal rights and you may also have other rights which vary from state to state.

June 23, 1978
Vetter Corporation

