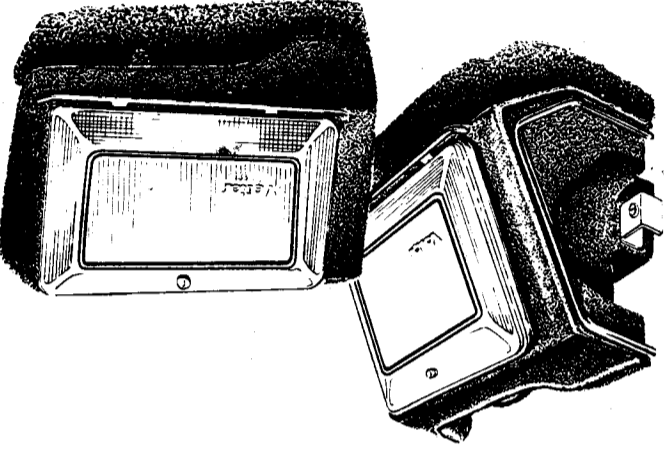


VETTER

SADDLE BAG HARDWARE INSTRUCTIONS

1981 GS750E, 850G, 1000G, 1100E
GS750E, 1100E
1980 GS850G, 1000E, G
1979 GS750E, 850G, 1000, E
1978 GS750, E, 1000, E
Suzuki 1977 GS750

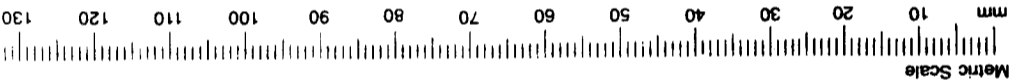


NOTE This manual may cover several motorcycles. Some illustration details may differ from your motorcycle. Follow the instructions.

If you are unable to determine if this hardware is for your motorcycle, contact your dealer. If your dealer is unavailable, contact the Vetter Corporation, Customer Service Department, Rantoul, IL 61866 (217) 893-9300. These instructions contain valuable information for future reference. They must be given to the customer.

WARNING THE HARDWARE DESCRIBED IN THIS MANUAL WAS DESIGNED SOLELY TO MOUNT THE VETTER FLOATING MOUNT SADDLE BAGS TO THE MOTORCYCLE(S) DESIGNATED.

USE THIS SCALE TO CHECK BOLT AND WASHER DIMENSIONS



9 Continue with your Saddle Bag Owner's Manual for saddle bag mounting and final adjustments. We suggest you insert these instructions in the Owner's Manual for future reference.

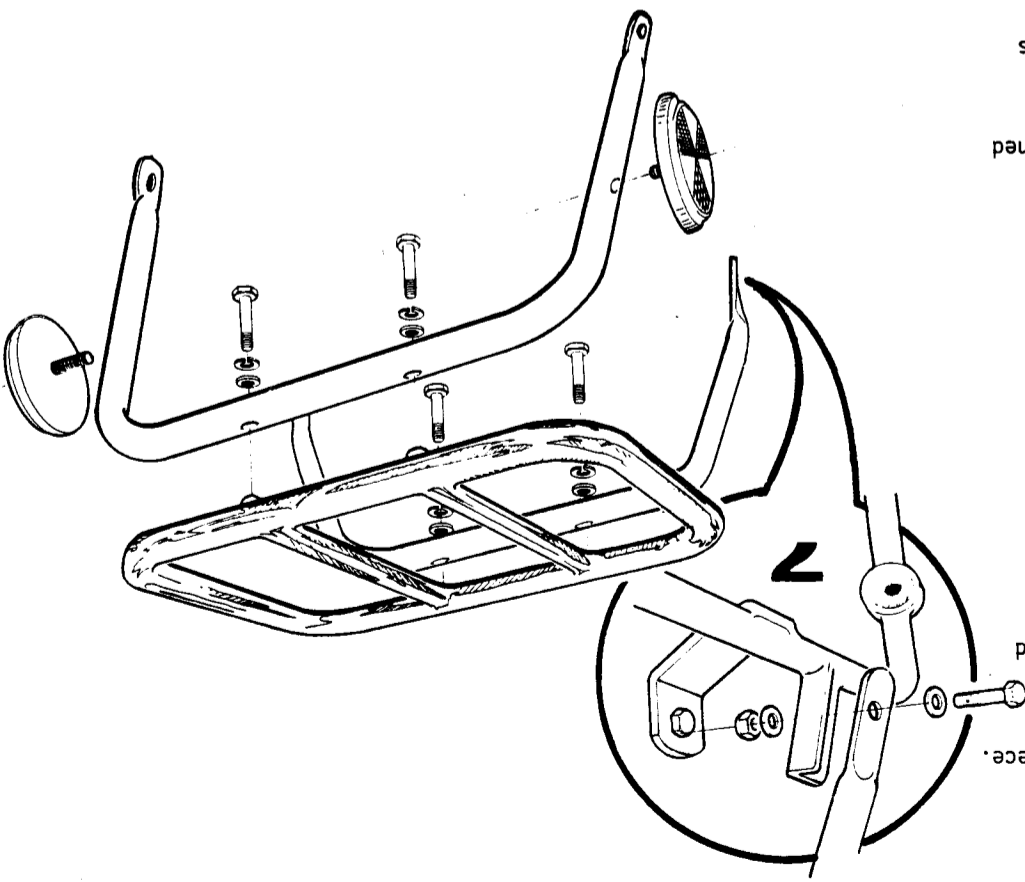
8 Mount the reflectors as shown. Make sure all mounting hardware is tightened securely at this time.

7 Mount the luggage rack to the rear luggage rack support using the remaining 6x30mm bolts, 6mm lock washers and 6mm flat washers as shown. Tighten all luggage rack mounting bolts to 6 ft.-lbs.

7 Mount the luggage rack to the forward luggage rack strut with the 6x30mm bolts, 6mm lock washers and 6mm flat washers as shown.

6 Reconnect tail light wiring if it was disconnected and remount the tail piece.

5 Reroute and reconnect the turn signal wires using the provided extension wires if necessary. Turn signal color code: Right-light green, Left-black and ground-black/white. Check for correct operation before continuing.



PREPARE THE MOTORCYCLE

1 Remove all fasteners which secure the tail piece to the fender and remove the tail piece.

NOTE Some models will require opening the seat to provide access to wire connections.

2 Trace the wires from the turnsignals and disconnect them from their bullet connectors.

3 Remove the bolt which secures the turnsignal assembly to the frame.

4 Remove the nut which holds the turnsignal bracket to the turnsignal stalk. Pull the white plastic plug off the end of the turnsignal stalk.

5 1977 GS750 Models Only

Snip off the bullet connector at the end of the turnsignal wire and remove the threaded stud from the turnsignal stalk.

Push the turnsignal wire just inside the stalk and cut the square boss off the stalk with a hacksaw.

Pull the wire from the stalk and thread the wire through the stud which must be reversed from its original position.

Screw the stud back into the stalk. Strip ¼" of insulation from the wire, and crimp on the supplied bullet connector.

1980 GS750ET,1100ET & 1981 GS1100EX

Remove the passenger footrests.

INSTALL THE HARDWARE

1 1980 GS750ET,1100ET & 1981 GS850GX,1100EX

Secure the sideloops to the stock turnsignal mounting locations using the stock mounting bolts, flat washers, lock washers and nuts. Finger-tighten only.

2 Remaining Models

Secure the sideloops to the stock turnsignal mounting locations using this sequence: supplied 8x55mm bolts, flat washer, bracket, frame, stock flat washer, provided 8mm flat washer and lock nut.

NOTE The GS750 requires 2 spacers between sideloops and frame.

2 1980 GS750ET,1100ET & 1981 GS1100EX

Position the front struts behind the frame at the footrest mounting location and secure as follows: Provided 10x40mm bolts, lock washers, footrests, motorcycle frame, muffler brackets, front struts, and secure with stock nuts. Tighten securely.

3 Remaining Models

Position the front strut saddle pads on the bike's frame below the footrests as shown. Secure with the provided hose clamps.

WARNING BE SURE THE HOSE CLAMP DOES NOT INTERFERE WITH THE MOVEMENT OF THE SWING ARM. POSITION THE HOSE CLAMP FOR MAXIMUM CLEARANCE. RECHECK THE HOSE CLAMPS PERIODICALLY DURING USE.

3 Secure the rear cross strut at the bottom rear of the sideloops using the 2-6x20mm bolts, 6mm flat washers and 6mm locknuts. Tighten at this time.

4 Position the rear luggage rack support with the luggage rack mounting holes pointing up.

5 1980 GS750ET,1100ET/1981 GS850GX,1000GX,1100EX

Insert the turnsignal stud through the stock flat washer, sideloop, rear support, 2-12mm flat washers, (use 3 for GS850GX,1100EX) 1-10mm flat washer, stock ground wire, lock washer and nut.

6 Remaining Models

Insert the turnsignal stud through the stock flat washer, sideloop, rear support, 2-12mm flat washers, (use 3 for GS850GX,1100EX) 1-10mm flat washer, stock ground wire, lock washer and nut.

